

H. Supporting Information for Exceedance Investigation and Findings

Photo 1 Provision of wastewater treatment facilities and proper drainage system as mitigation measure



Photo 2 Wastewater treatment facilities (AquaSed, sedimentation tanks) inside the site (near discharge outlet to the northern ditches)



Photo 3 **Appearance of the water body at MP3 on 1 February 2025**



Photo 4 **Appearance of the water body at MP3 on 3 February 2025**



Photo 5 **Appearance of the water body at MP3 on 10 February 2025**



Photo 6 **Appearance of the water body at MP3 on 12 February 2025**



Photo 7 **Appearance of the water body at MP3 on 17 February 2025**



Photo 8 **Appearance of the water body at MP4 on 1 February 2025**



Photo 9 **Appearance of the water body at MP4 on 3 February 2025**



Photo 10 **Appearance of the water body at MP4 on 5 February 2025**



Photo 11 **Appearance of the water body at MP4 on 7 February 2025**



Photo 12 **Appearance of the water body at MP4 on 10 February 2025**



Photo 13 **Appearance of the water body at MP4 on 12 February 2025**



Photo 14 **Appearance of the water body at MP4 on 14 February 2025**



Photo 15 **Appearance of the water body at MP4 on 17 February 2025**



Photo 14 **Appearance of the water body at MP4 on 19 February 2025**



Photo 15 Appearance of the water body at MP5 on 3 February 2025



Photo 16 Appearance of the water body at MP5 on 12 February 2025

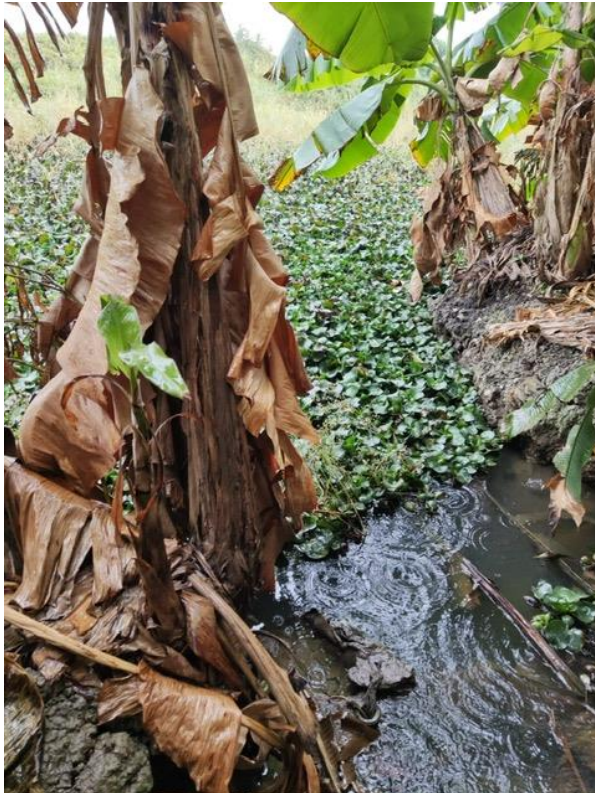


Photo 17 Appearance of the water body at MP5 on 14 February 2025



Photo 18 Appearance of the water body at MP6 on 1 February 2025



Photo 19 Appearance of the water body at MP6 on 3 February 2025



Photo 20 Appearance of the water body at MP6 on 12 February 2025



Photo 21 **Appearance of the water body at MP6 on 14 February 2025**



Photo 22 **Appearance of the water body at MP6 on 28 February 2025**

